

PROVIDENCE, R.I.
CITY ENGINEER'S OFFICE

STREET LINE DEPT.

July 13, 1896.

025405

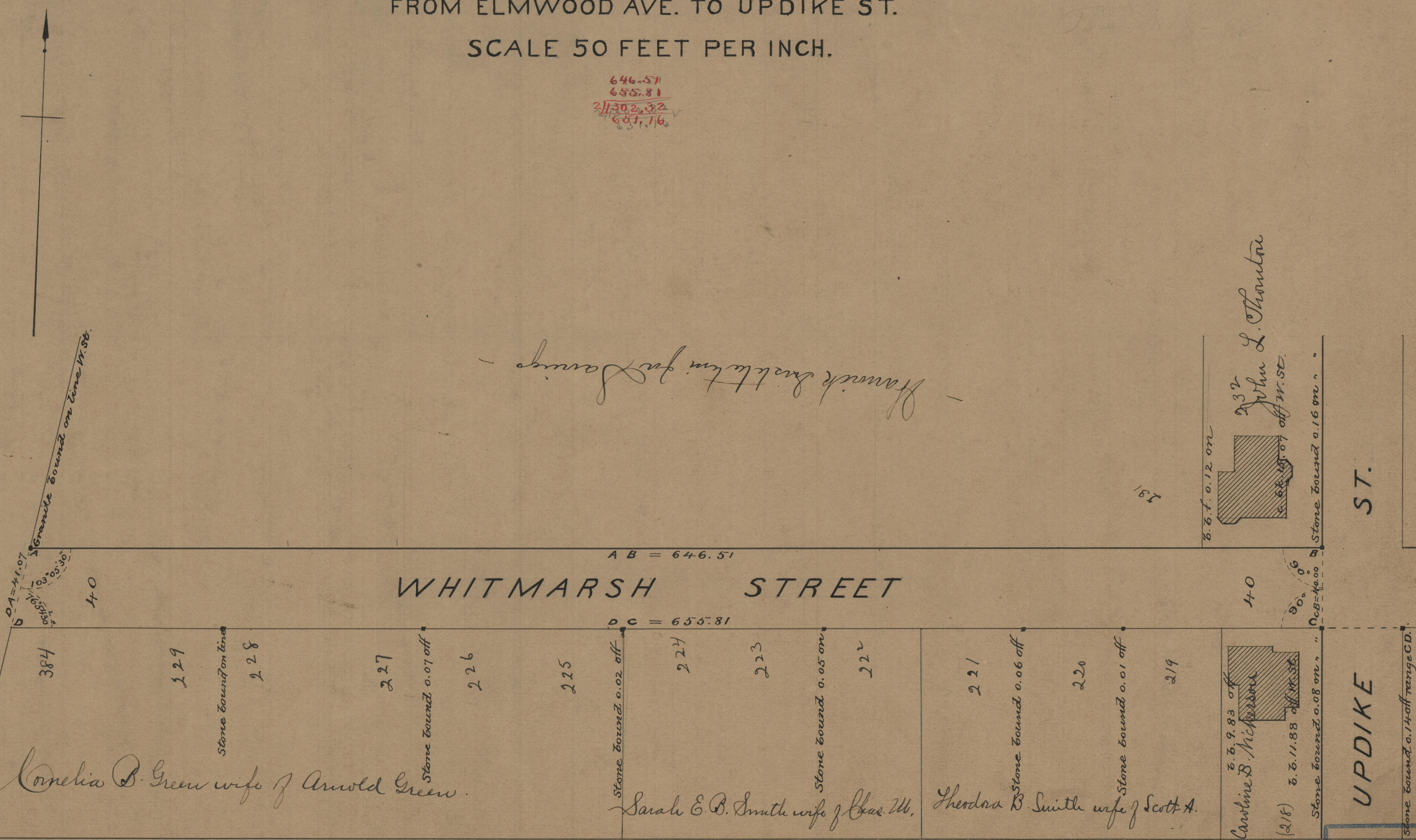
PLAT OF WHITMARSH STREET

FROM ELMWOOD AVE. TO UPDIKE ST.

SCALE 50 FEET PER INCH.

646.51
655.81
21302.32
657.16

ELMWOOD AVE.



Francis Smith in possession for 30 years

John L. Thornton

DA = 41.07
100° 00' 00"
100° 00' 00"
40

AB = 646.51

DC = 655.81

90° 00' 00"
90° 00' 00"
40

Cornelia B. Green wife of Arnold Green.

Sarah E. B. Smith wife of Chas. W.

Theodora B. Smith wife of Scott A.

Caroline B. Nickerson
(218) 6.6.11.88 off W. St.

OFFICE No. 12984
DRAWER " 82
SHEET " A-107